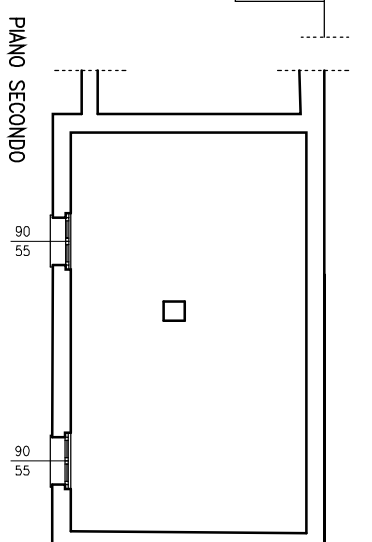
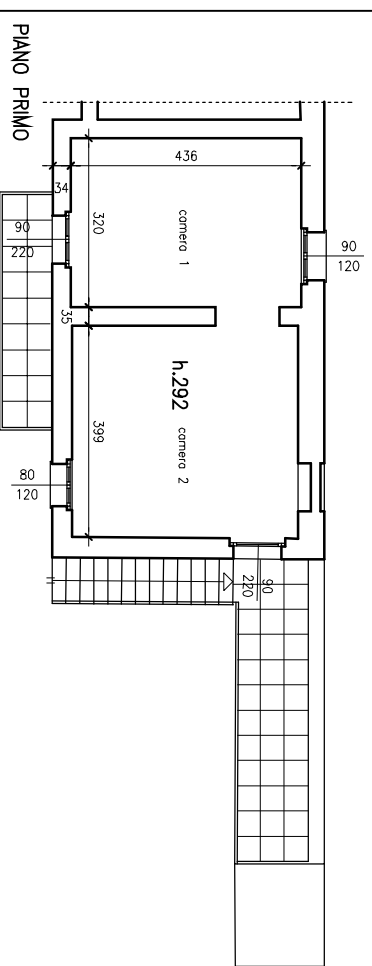


FRONTE OVEST

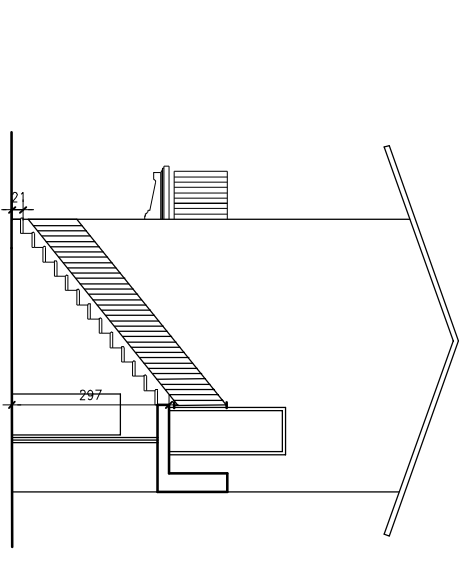
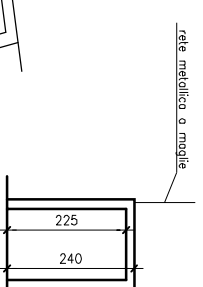
FRONTE EST

SEZIONE A-A



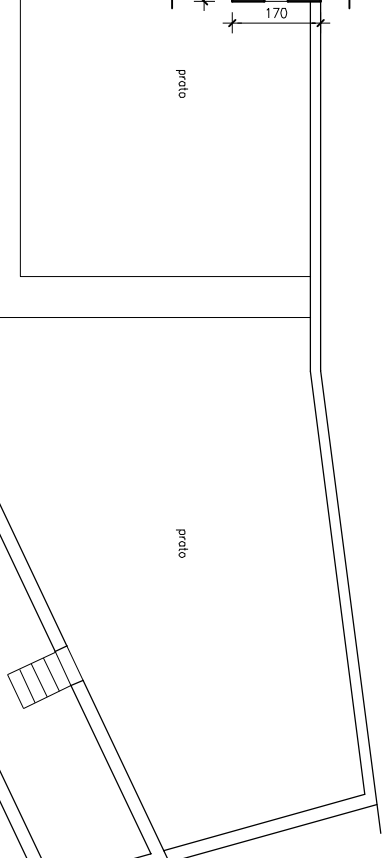
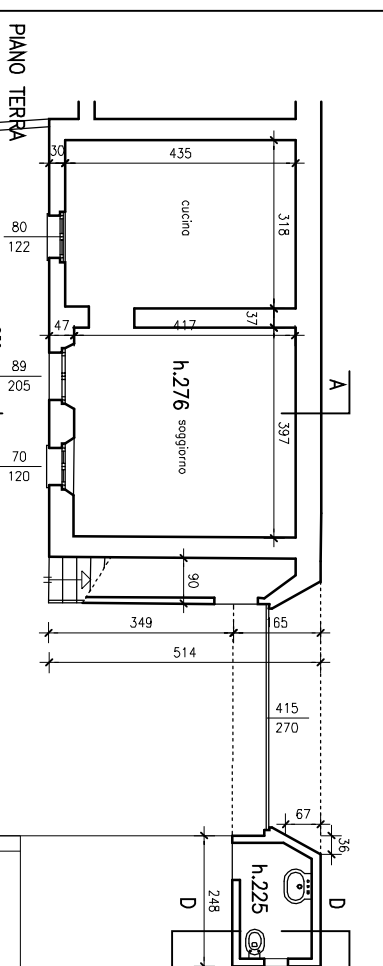
PIANO PRIMO

PIANO SECONDO



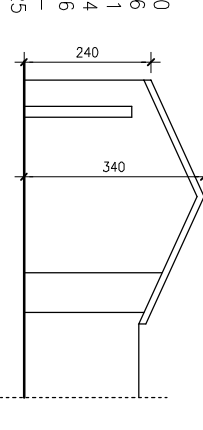
SEZIONE D-D

FRONTE SUD

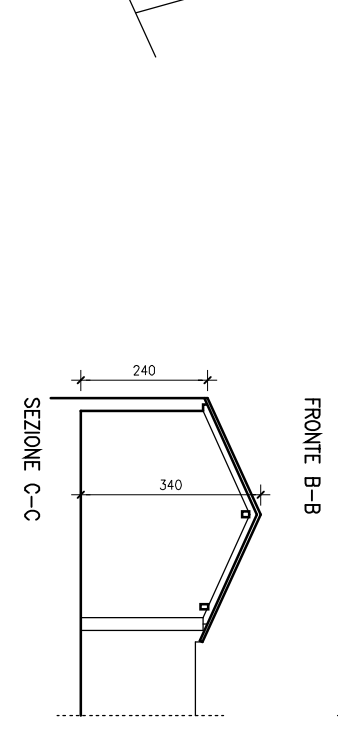
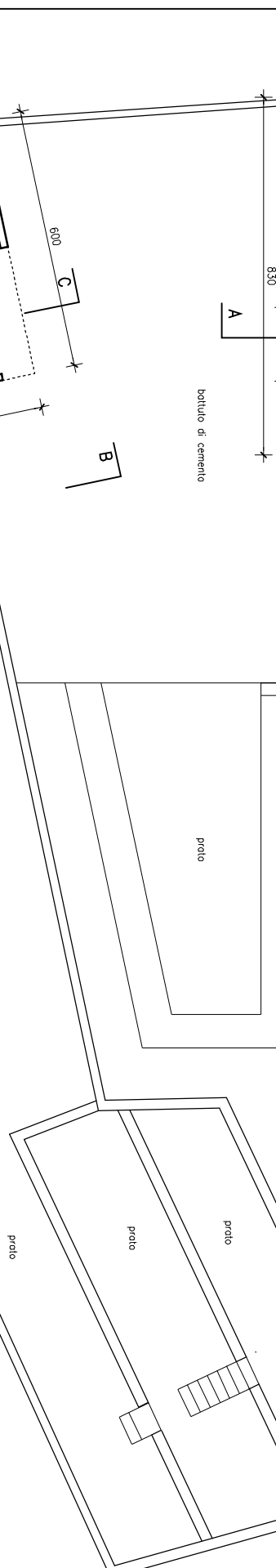


Superfici da demolire
 autorimessa 4,40 x 6,0 = mq. 26,400
 bagno 2,48 x 1,7 = mq. 4,216
 sottoscala 0,9 x 3,49 = mq. 3,141
 sottoscala 0,9 x 1,65 = mq. 1,484
 sgunci portone 0,67x0,36x0,5x2 = -0,216

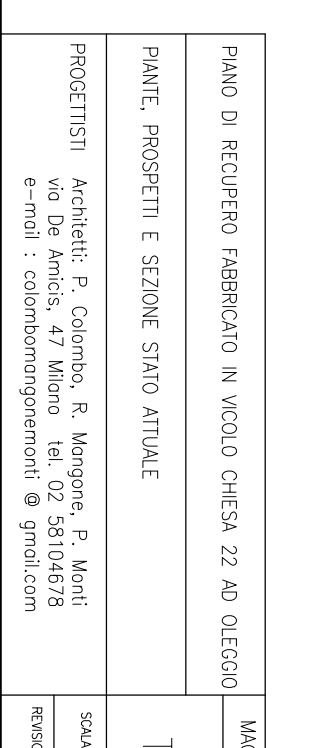
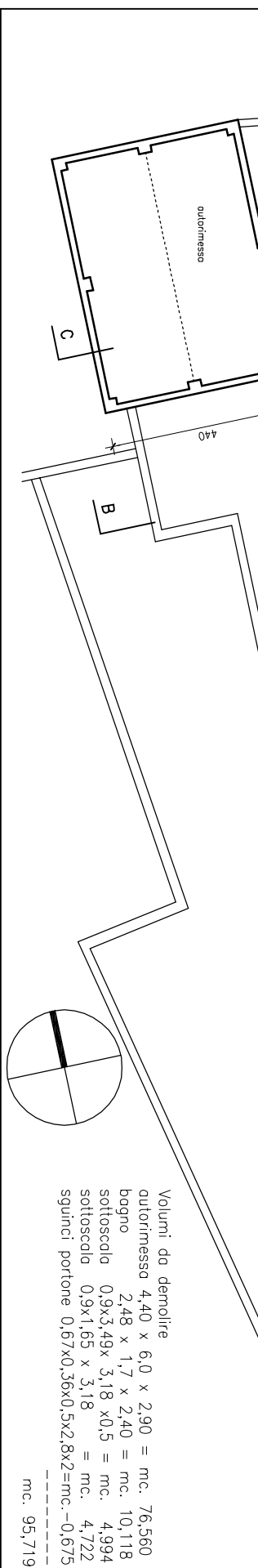
 mq. 35,025



FRONTE B-B



SEZIONE C-C



Volumi da demolire
 autorimessa 4,40 x 6,0 x 2,90 = mc. 76,560
 bagno 2,48 x 1,7 x 2,40 = mc. 10,118
 sottoscala 0,9x3,49x 3,18 x0,5 = mc. 4,994
 sottoscala 0,9x1,65 x 3,18 = mc. 4,722
 sgunci portone 0,67x0,36x0,5x2,8x2=mc.-0,675

 mc. 95,719

PIANO DI RECUPERO FABBRICATO IN VICOLO CHIESA 22 AD OLEGGIO
 PIANTE, PROSPETTI E SEZIONE STATO ATTUALE
 PROGETTISTI Architetti: P. Colombo, R. Mangone, P. Monti;
 via De Aricis, 47 Milano tel. 02 58104678
 e-mail : colombomangonemonti @ gmail.com
 MAGGIO 2017
 TAV. 2
 SCAUA 1:100
 REVISIONE